

Inspiration Fireplace Suite Installation Instructions

To suit IB25 Slimfire in fireplace models INSP (MB / MC / MR / 3FB / 3FD / 4FB / 4FD)

Product must be installed in accordance with the manufacturers instructions.

Installation, Service & Removal by an Authorised Person only.

TOOLS & MATERIALS

- Flat or Phillip's head screwdriver
- Drill
- Drill bit, 4mm wood or 6mm masonry as required
- Pencil

MANTEL ASSEMBLY

Unpack mantel components and lay them face down on a non abrasive surface. DO NOT drag or slide timber components from the carton. DO NOT install mantel if components are damaged.

1. Fit the components together as shown, aligning the holes located in the top panel (A) with those located in the side panels (B) and (C).

Screw the mantel assembly together using the sleeved nuts (D) & bolts (E) provided.

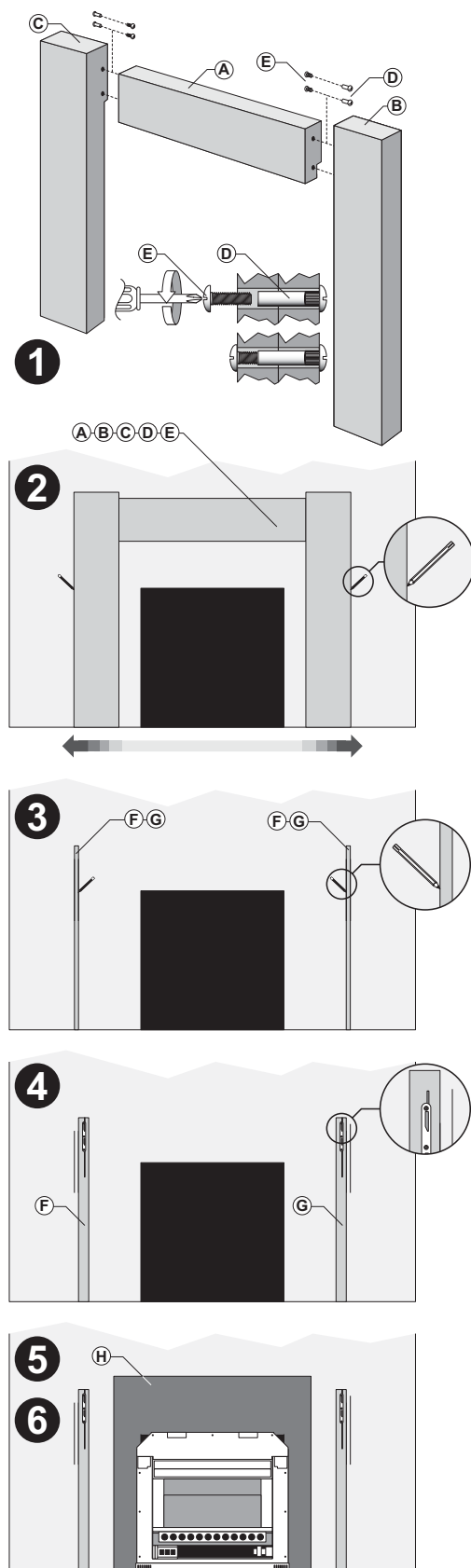
INSTALLATION

False fireplace installations (Diagrams 1. & 2.) MUST use a zero clearance box (ZEROS). Assemble the zero clearance box using instructions supplied.

Install the assembled zero clearance box into the fireplace leaving a 5mm protrusion, this is to allow the front of the zero clearance box to be flush with cast iron fascia.

Masonry fireplace installations (Diagram 3.) require an additional plinth set FLFSPB or FLFSPS to enable the Slimfire heater to be installed, plinth set is to be purchased separately.

2. Centre the assembled mantel frame over the fireplace and mark off the outer limit of both the left and right edges.
3. Using the thin edge (20mm) of one of the mounting battens (F) or (G) as a guide, mark off to the inside of the first marking.
4. Secure the mounting battens (F) left & (G) right on the inside of the second marking. Fix into solid anchor points such as studs or masonry at two points as close to the top and bottom as possible.
5. Locate the cast iron fascia (H) over the zero clearance box or masonry opening.
6. Install the Slimfire heater, as per the installation instruction supplied with the appliance.



Inspiration Fireplace Suite Installation Instructions

7. Lift mantel into position ensuring that both the mantel hooks of the side panels (B) and (C) are aligned with the docking plate grooves of the battens (F) and (G).

8. Lower the mantel assembly so that the mantel hooks are securely engaged into the docking plate grooves.

When installing a four sided fascia (Diagram 2.) slide the hearth (I) into position once the mantel is secured.

CARE AND MAINTENANCE

An occasional wipe over with a soft cloth will keep your timber and cast iron components clean.

HINTS AND TIPS

For more information on caring for your Inspiration fireplace suite contact Agnews.

Phone: 03 9426 2905
Fax: 03 9426 2990
Email: info@agnews.com.au
Web: www.agnews.com.au

AGNEWS FIREPLACES PTY LTD
376 Swan Street
Richmond
Victoria, 3121

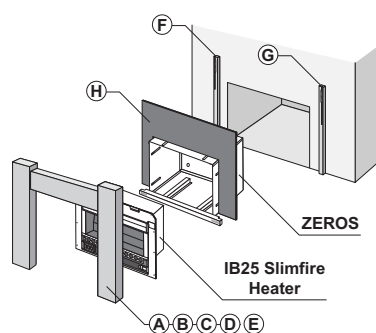
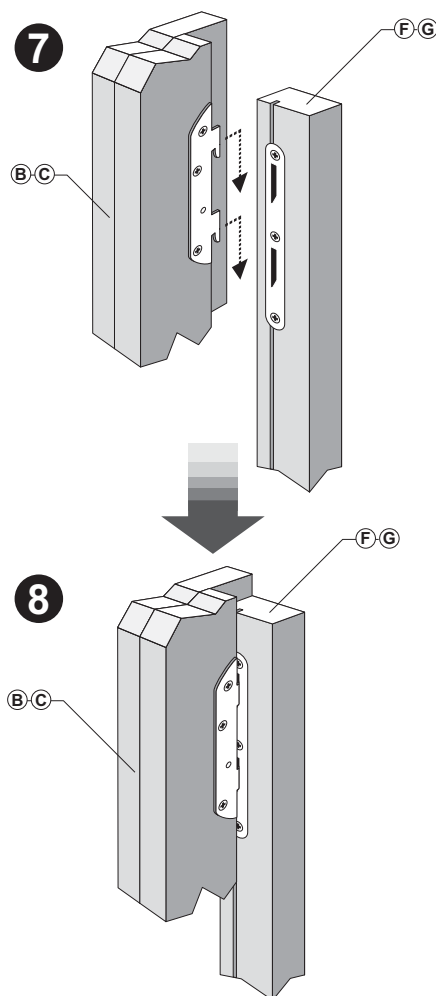


Diagram 1.
False Fireplace
Three Sided Fascia

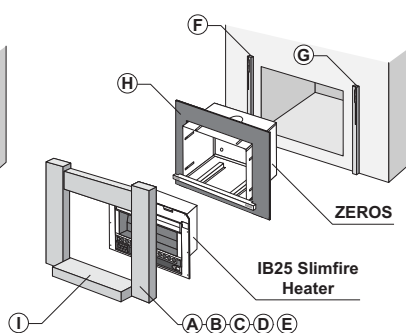


Diagram 2.
False Fireplace
Four Sided Fascia

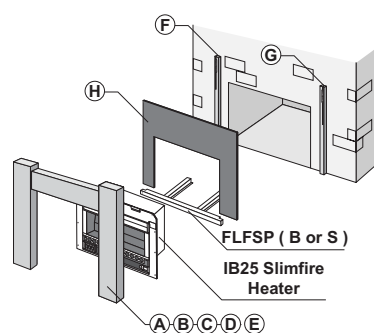


Diagram 3.
Masonry Fireplace
Three Sided Fascia

Rinnai Australia Pty. Ltd. ABN 74 005 138 769

Head Office

10-11 Walker Street,
Braeside, Victoria 3195
P.O. Box 460

Tel: (03) 9271 6625
Fax: (03) 9271 6622

National Help Lines

Spare Parts & Technical Info
Tel: 1300 366 388*
Fax: 1300 300 141*

Internet: www.rinnai.com.au
E-mail: enquiry@rinnai.com.au

*Cost of a local call Higher from mobile or public phones.