

Temperature & Model Dip-Switch Settings for INFINITY 16 (42 PRESET) - REU VR1620WG42 ONLY



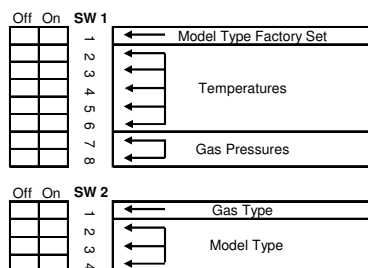
- Confirm that ALL DIGITS of the model number on the appliance dataplate match the model numbers above.



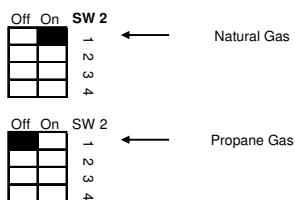
- Dipswitch settings must only be set by an authorised person.
- All dipswitches MUST be set for the particular model in accordance with this Instruction. Incorrect dipswitch settings may result in a dangerous condition or damage to the appliance.

Dipswitch Settings

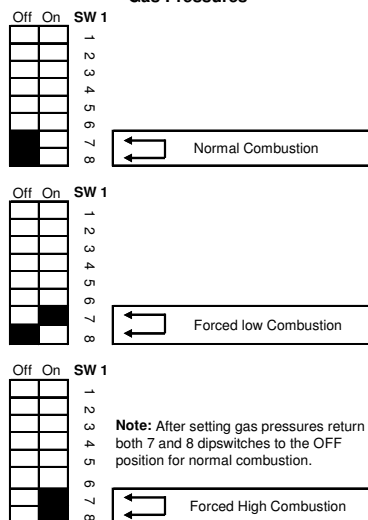
Dip Switches Explained & Model Setting



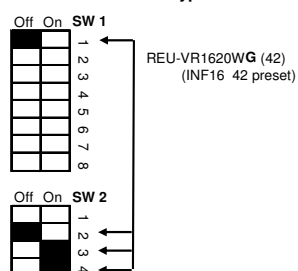
Gas Type



Gas Pressures



Model Type



Temperature

Temperature dipswitch settings cannot be adjusted on factory preset 42°C models, Contact TSD for further information

Legend



Black indicates position of switch